

SHARJAH HEALTHCARE CITY STANDARD COMPONENTS

Room Layout Sheet

Room Name

Bay - Pathology

RLS Room Code BPATH-SJ
RDS Room Code BPATH-SJ

- AS

CAC

CG

COM/2

DHT

DS

DSA

GPO/1

GPO/1EP

LS/P

SK4

SS

V1
- ADJUSTABLE SHELF

CABLE ACCESS CAP

CORNER GUARD

COMMUNICATION OUTLET - DOUBLE

DISPENSER - HAND TOWEL

DISPENSER - SOAP

DISPENSER - SOAP, ANTISEPTIC

GENERAL POWER OUTLET - SINGLE

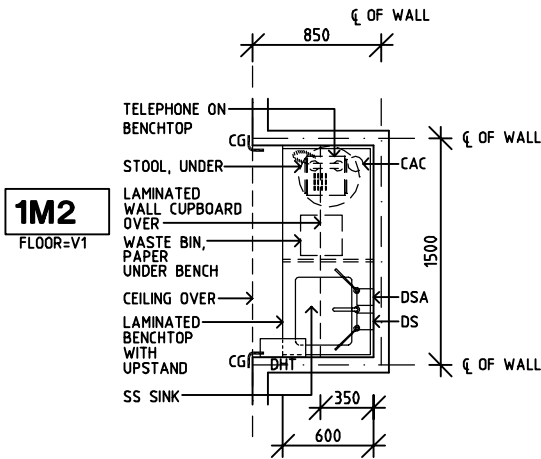
EMERGENCY POWER OUTLET - SINGLE

LIGHT SWITCH - PELMET TASK LIGHT

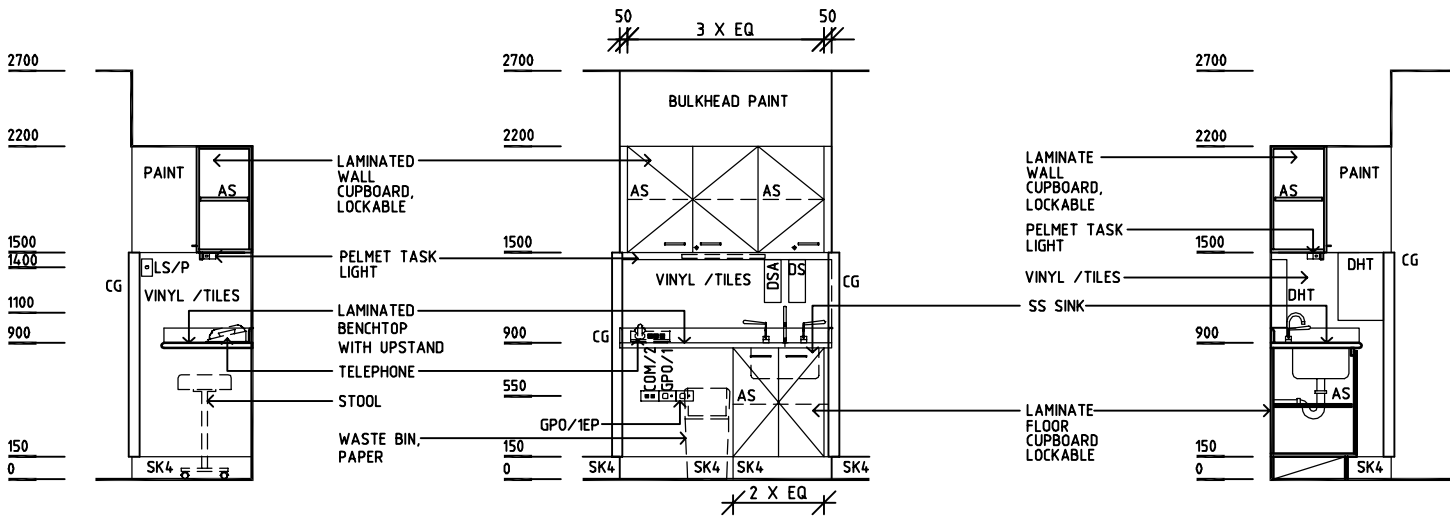
FLOOR VINYL COVED SKIRTING

STAINLESS STEEL

VINYL FLOORING, STANDARD SLIP RESISTANT



PLAN



ELEVATION 1

ELEVATION 2

ELEVATION 3

REV	DESCRIPTION	DATE	BY	REV	DESCRIPTION	DATE	BY	REV	DESCRIPTION	DATE	BY
1	FIRST ISSUE	14.03.2014	AA								

 SHCC Guidelines	Sharjah Health Facility Guidelines at: www.healthdesign.com.au/shcc/hfg Editable version of Standard Components on Health Facility Briefing System (HFBS) at: www.healthdesign.com.au Provided by TAHPI		DESIGNED	APPROVED	DATE	SCALE(S)	SHEET
	CC	DB	30.12.13	1:50 in A3	1 of 1		
	CAD FILE NAME BPATH-SJ		PAPER DRAWING ID BPATH-SJ		ISSUE 1		